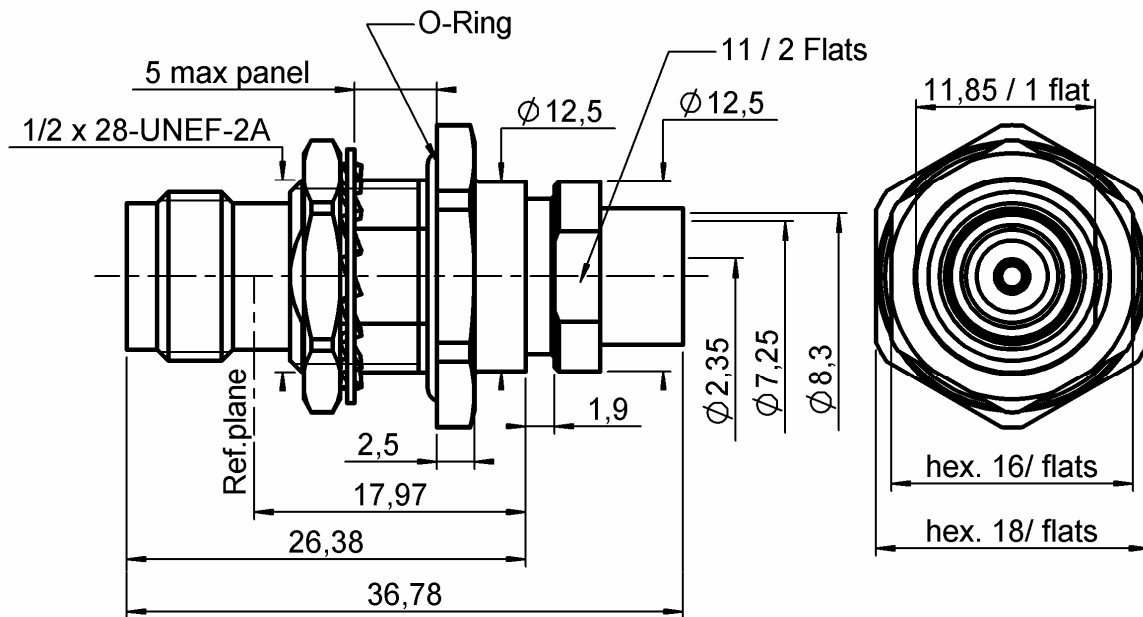


**STRAIGHT BULKHEAD JACK PANEL SEAL**

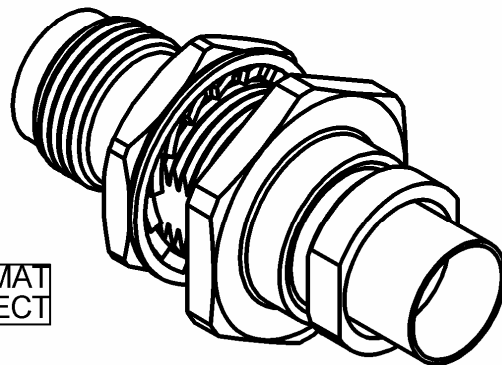
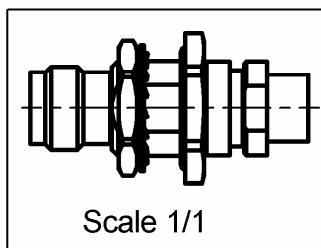
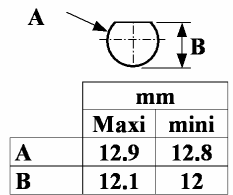
**SOLDER TYPE CABLE SHF8M/8LI**

**R143.338.L01**

Series : TNC-18

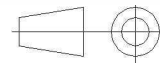


**PANEL CUT OUT**



ASPECT MAT  
MAT ASPECT

All dimensions are in mm.



COMPONENTS	MATERIALS	PLATING ( $\mu\text{m}$ )
BODY	STAINLESS STEEL (316L)	PASSIVATED .
CENTER CONTACT	CuBe2	GOLD 2.5 OVER NICKEL 2
OUTER CONTACT	-	-
INSULATOR	PTFE	-
GASKET	FLUOROSILICON	-
OTHERS PARTS	ST. STEEL (316L) , BRASS	PASSIVATED GOLD
-	-	-
-	-	-

Issue : 0605 A

In the effort to improve our products, we reserve the right to make changes judged to be necessary.



**STRAIGHT BULKHEAD JACK PANEL SEAL**

**R143.338.L01**

**SOLDER TYPE CABLE SHF8M/8LI**

Series : TNC-18

**PACKAGING**

Standard	Unit	Other
<b>100</b>	<b>'W' option</b>	<b>Contact us</b>

**SPECIFICATION**

**ELECTRICAL CHARACTERISTICS**

Impedance		<b>50</b> Ω
Frequency		<b>0-18</b> GHz
VSWR	<b>1.15 +</b>	<b>0,0000</b> x F(GHz) Maxi
Insertion loss		<b>0.06</b> √F(GHz) dB Maxi
RF leakage	- (	<b>90</b> - F(GHz)) dB Maxi
Voltage rating		<b>500</b> Veff Maxi
Dielectric withstanding voltage		<b>1500</b> Veff mini
Insulation resistance		<b>5000</b> MΩ mini

**CABLE ASSEMBLY**

Stripping	a	b	c	d	e	f
mm	20,0	3,80	0,00	0,00	0,00	0,00

Assembly instruction :

Recommended cable(s)  
F1703-197  
F1703-160

Characteristics indicated on this data sheet are those that can be achieved with the highest performance cable. Intrinsic limitations of the cable may diminish the performance of the assembly

Cable retention

- pull off \* N mini  
- torque NA N.cm

**MECHANICAL CHARACTERISTICS**

Center contact retention		
Axial force – Mating end	<b>27</b>	N mini
Axial force – Opposite end	<b>27</b>	N mini
Torque	<b>NA</b>	N.cm mini

**TOOLING**

Part Number	Description	Hexagon
.	.	.

Recommended torque		
Mating	<b>NA</b>	N.cm
Panel nut	<b>370</b>	N.cm
Clamp nut	<b>300</b>	N.cm
A/F clamp nut	<b>11,0000</b>	mm

**OTHER CHARACTERISTICS**

\* see the TDS cable assembly

Mating life	<b>500</b>	Cycles mini
Weight	<b>19,9240</b>	g

**ENVIRONMENTAL**

Operating temperature	<b>-65/+165</b>	°C
Hermetic seal	<b>NA</b>	Atm.cm3/s
Panel leakage	<b>IP67</b>	

Issue : 0605 A

In the effort to improve our products, we reserve the right to make changes judged to be necessary.



**STRAIGHT BULKHEAD JACK PANEL SEAL**

**R143.338.L01**

**SOLDER TYPE CABLE SHF8M/8LI**

Series : TNC-18

**COMPONENTS**

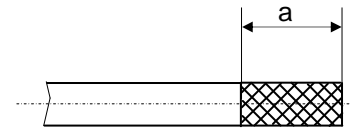
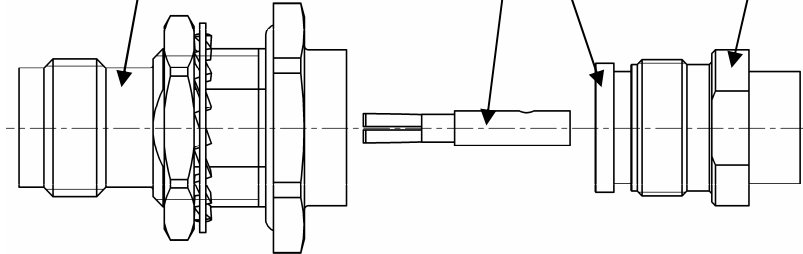
**STRIPPING DIMENSIONS**

Sub Assembly Body

Center contact

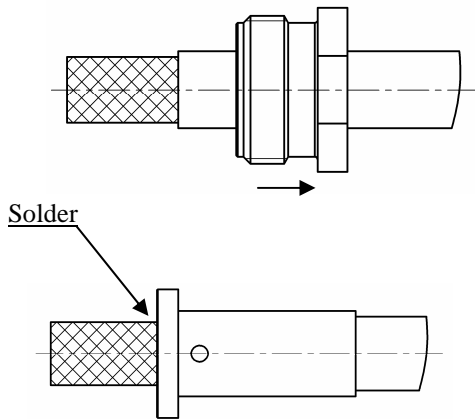
Solder sleeve

Clamp nut



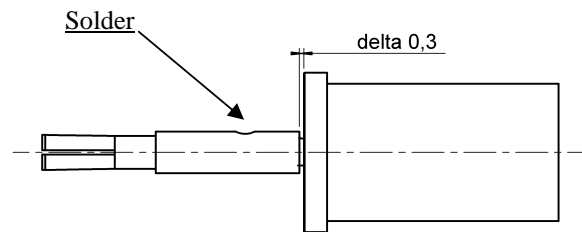
1

Strip the cable.  
Slide the clamp nut onto the cable.  
Solder the ferrule onto the braid of the cable.



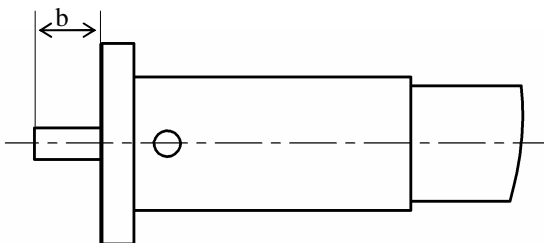
3

Slide the center contact onto the cable. Inserting between contact and ferrule the area gap.  
Solder the contact onto the inner conductor.



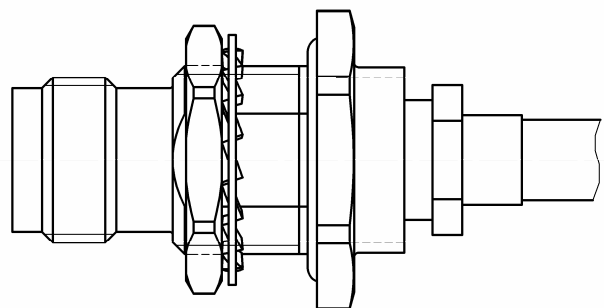
2

Cut the excess of braid and dielectric leveled on the sleeve.



4

Mount the whole body into the main sub assembly and screw the solder sleeve.  
(recommended coupling torque 300 N/cm)



Issue : 0605 A

In the effort to improve our products, we reserve the right to make changes judged to be necessary.



**RADIALL**®